

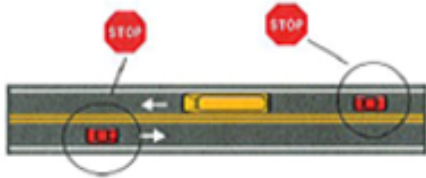


It's The Law

1

Two-lane roadway

When school bus stops for passengers, all traffic from both directions must stop!



2

Two-lane roadway with a center turning lane:

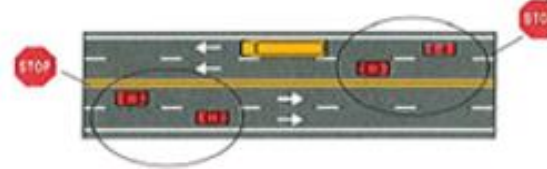
When school bus stops for passengers, all traffic from both directions must stop!



3

Four-lane roadway without a median separation:

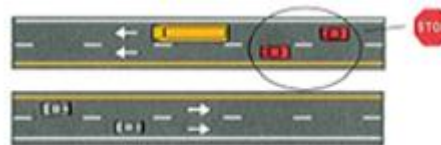
When school bus stops for passengers, all traffic from both directions must stop!



4

Divided highway of four or more lanes with a median separation:

When school bus stops for passengers, only traffic following the bus must stop!



5

Roadway of four lanes or more with center turning lane:

When school bus stops for passengers, only traffic following the bus must stop!

